

Repairing an HP logic probe

I published a repair article in the May 2021 publication of Practical Wireless Magazine.

Electronic viewing of the magazine, as part of a subscription, is here:
<https://pocketmags.com/eu/practical-wireless-magazine>

As necessitated by space constraints the photos in the article might be a little small to be of any use for some readers.

So here are each of the photographs in high resolution.

Samuel



Figure 1 – The HP10525A logic probe

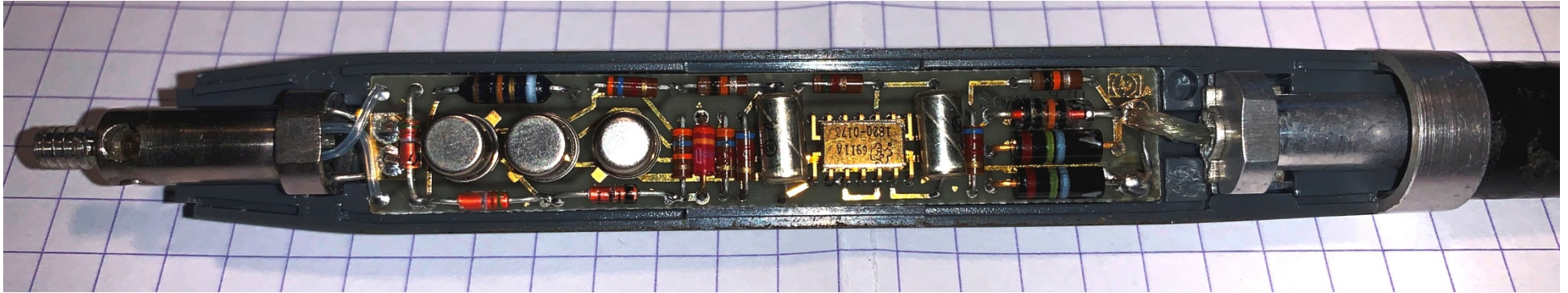


Figure 2 – Half shell removed

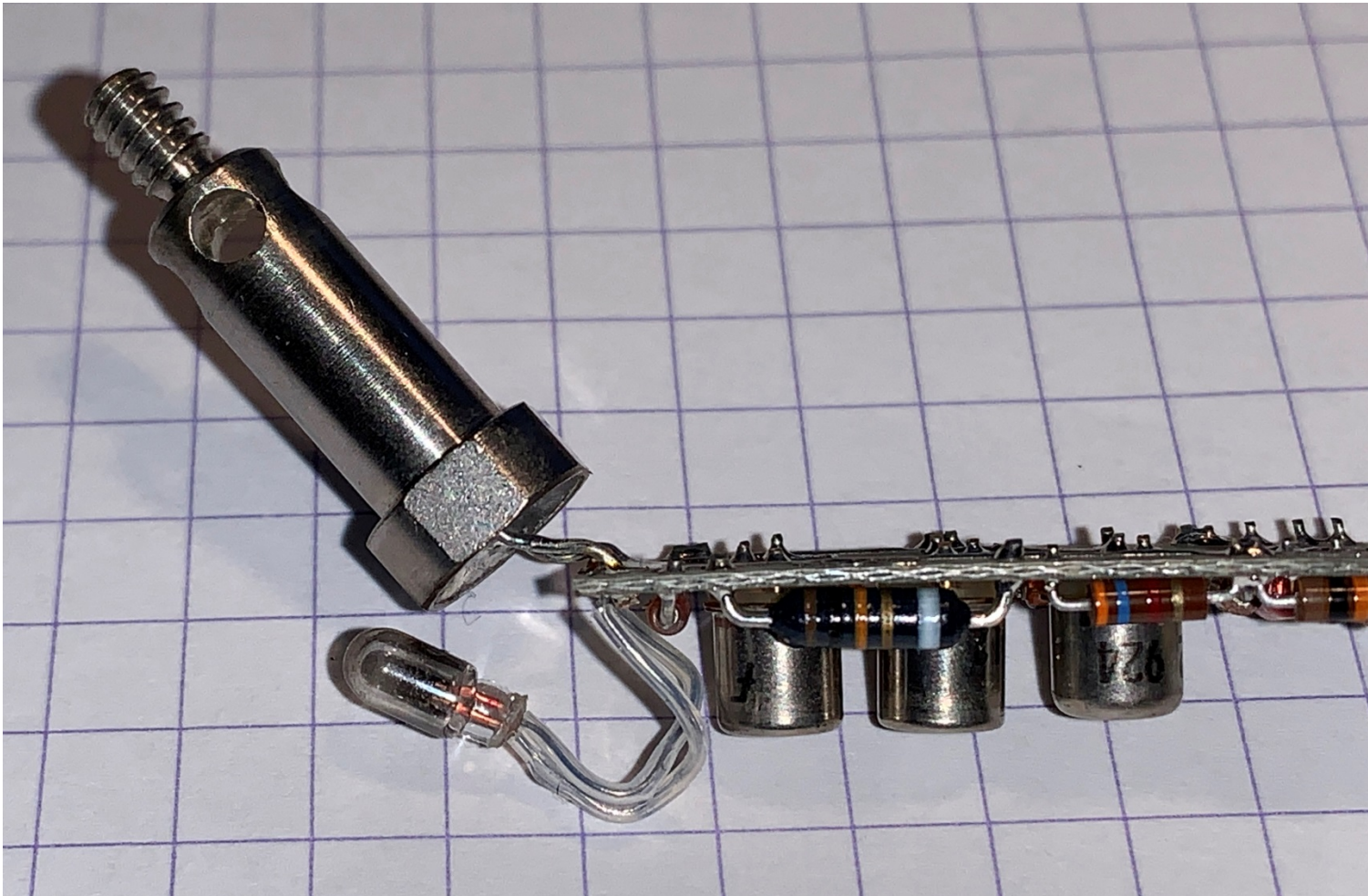


Figure 3 – Accessing the bulb

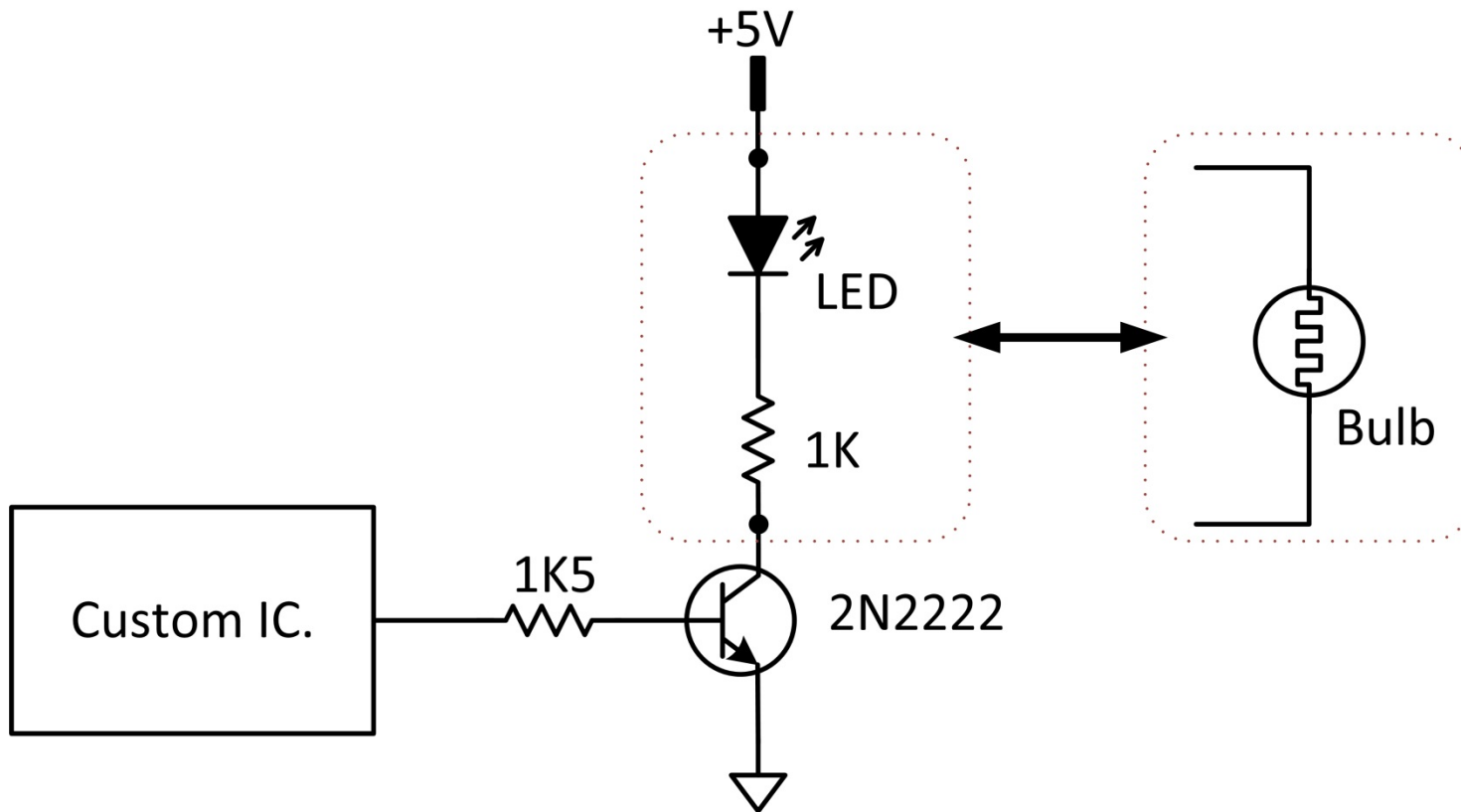


Figure 4 – LED Driver circuit



Figure 5 – Comparing the bulb, an untouched LED and a cropped and filed down LED

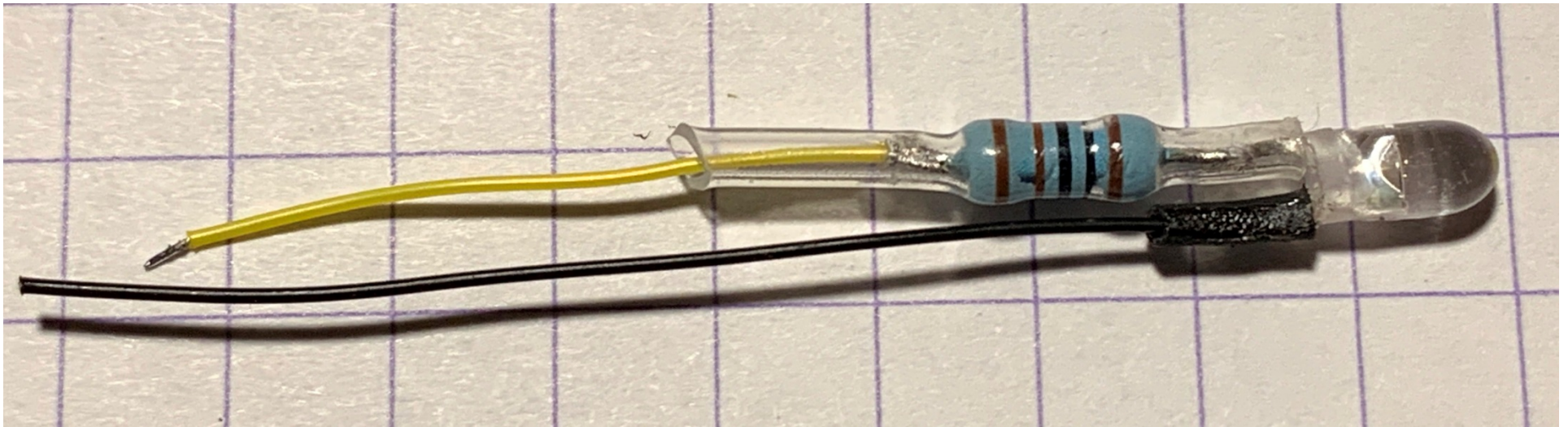


Figure 6 – LED with current limiting resistor and wires ready for insertion.

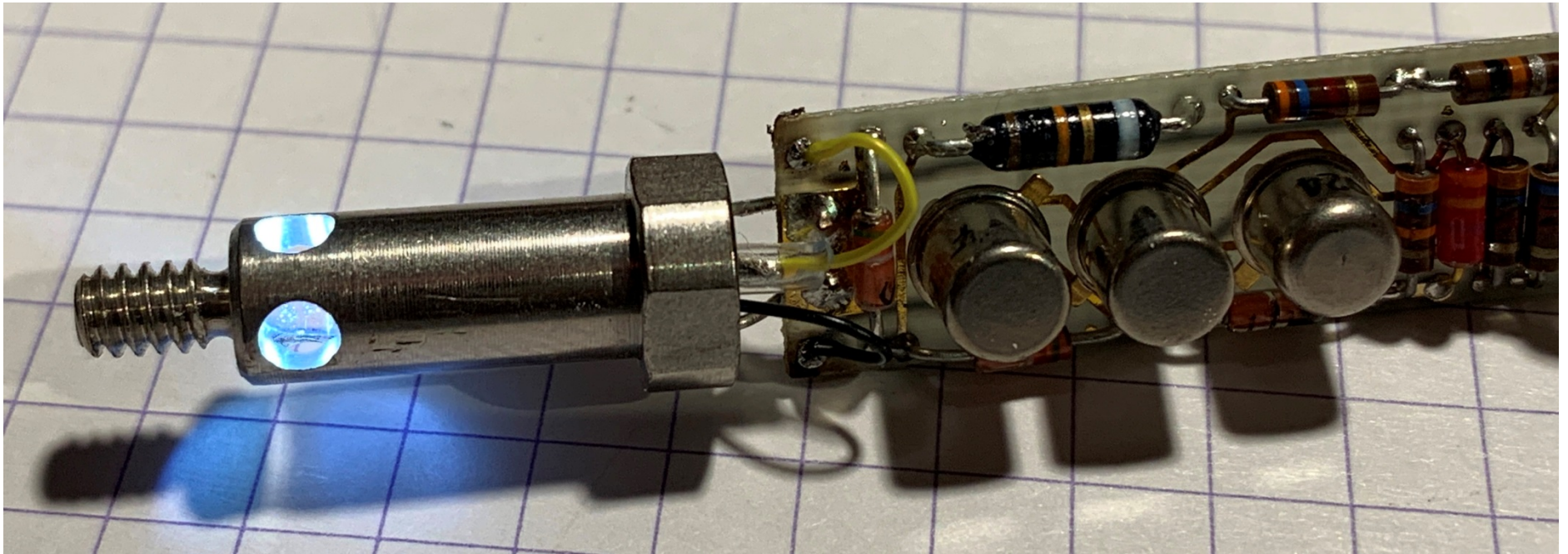


Figure 7 – LED inserted, probe tested and ready for reassembly

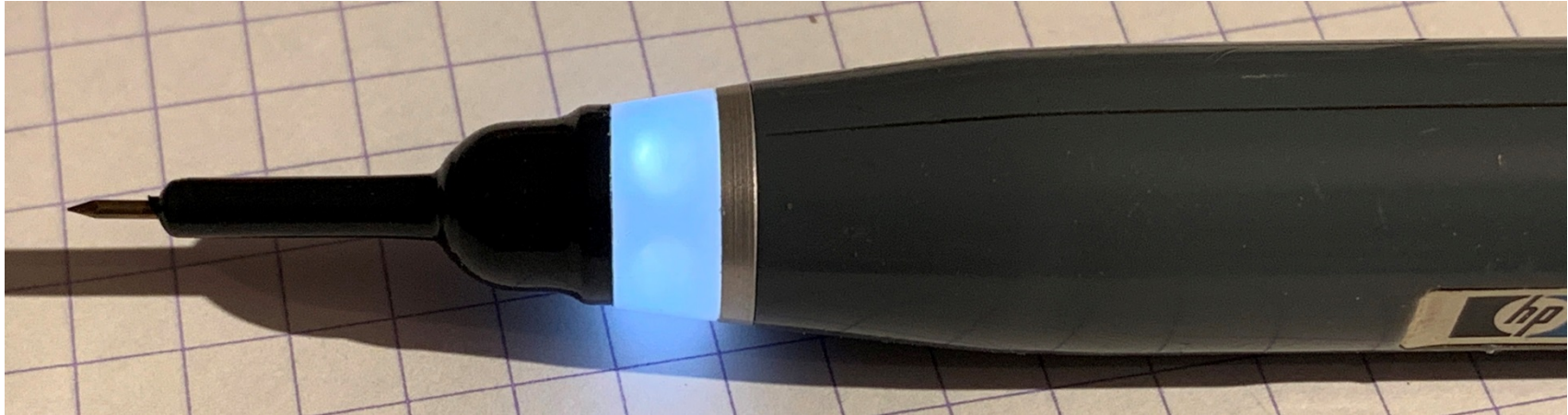


Figure 8 – Reassembled and ready for action